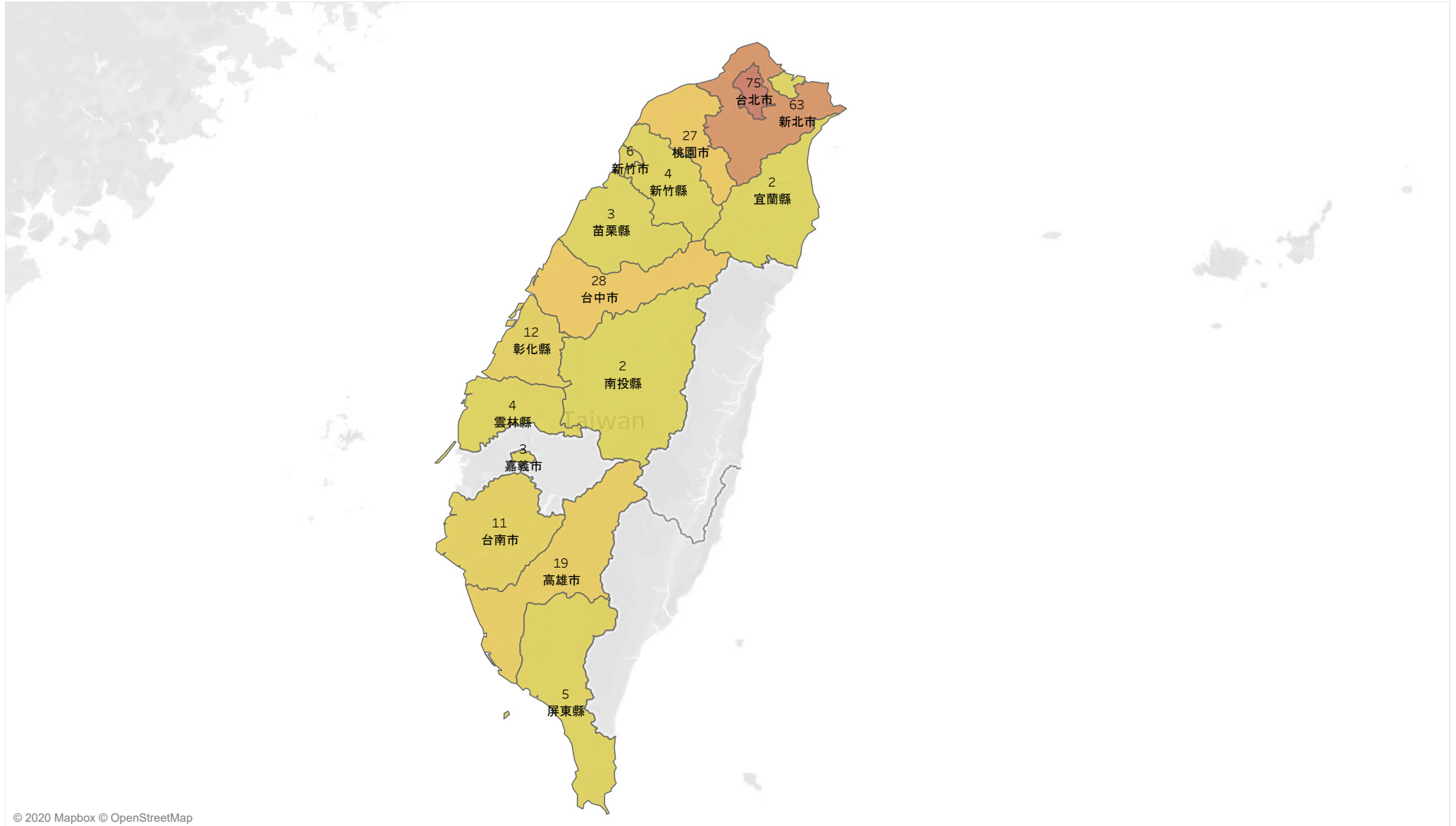


COVID-19 台灣確定病例數 267 - 依 縣市 (March 28, 2020)

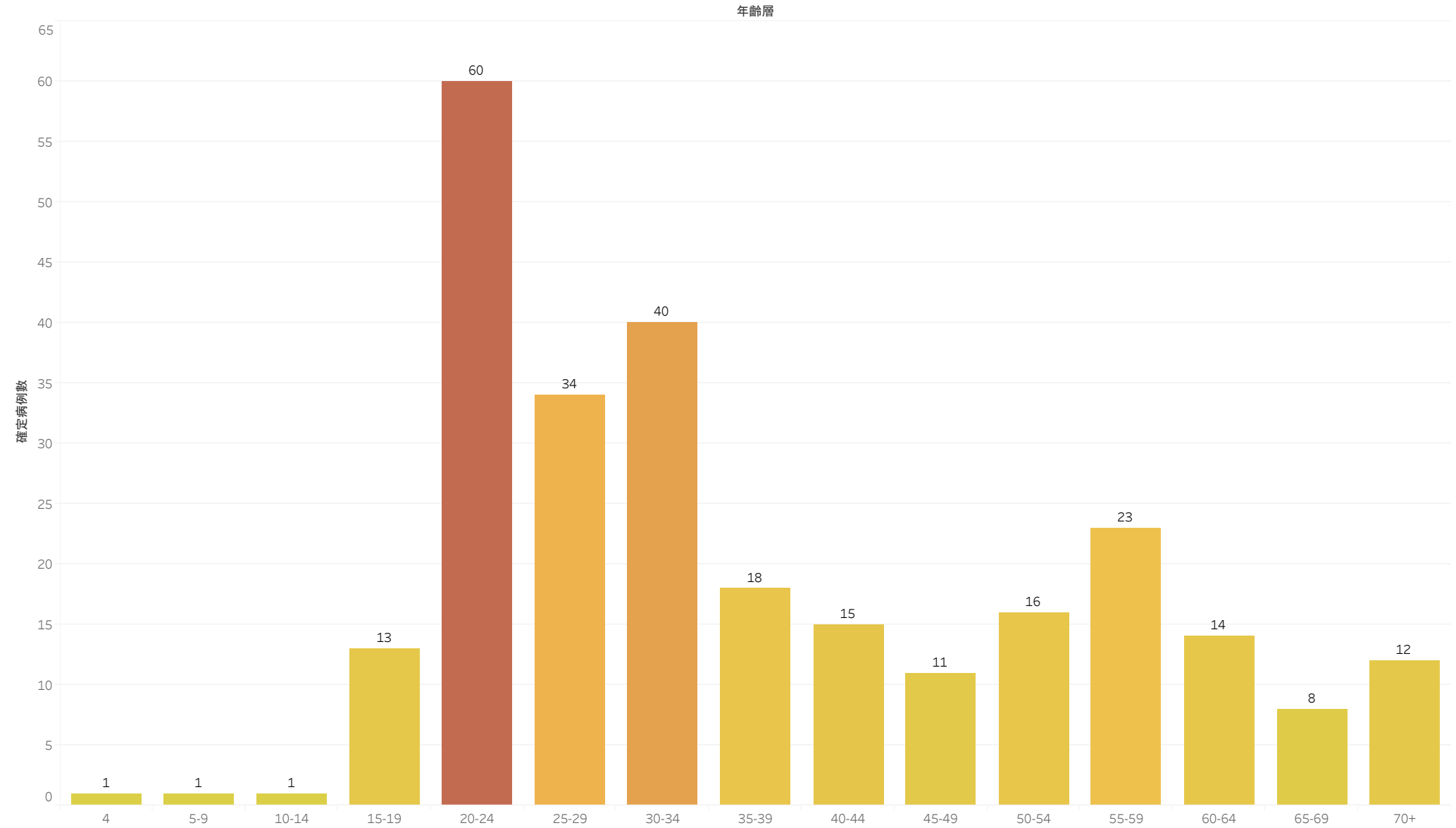


© 2020 Mapbox © OpenStreetMap

Map based on Longitude (generated) and Latitude (generated). Color shows sum of 確定病例數. The marks are labeled by sum of 確定病例數 and 縣市. Details are shown for 縣市 and Today (MDY).



# COVID-19 台灣確定病例數 267 - 依 年齡層 (March 28, 2020)

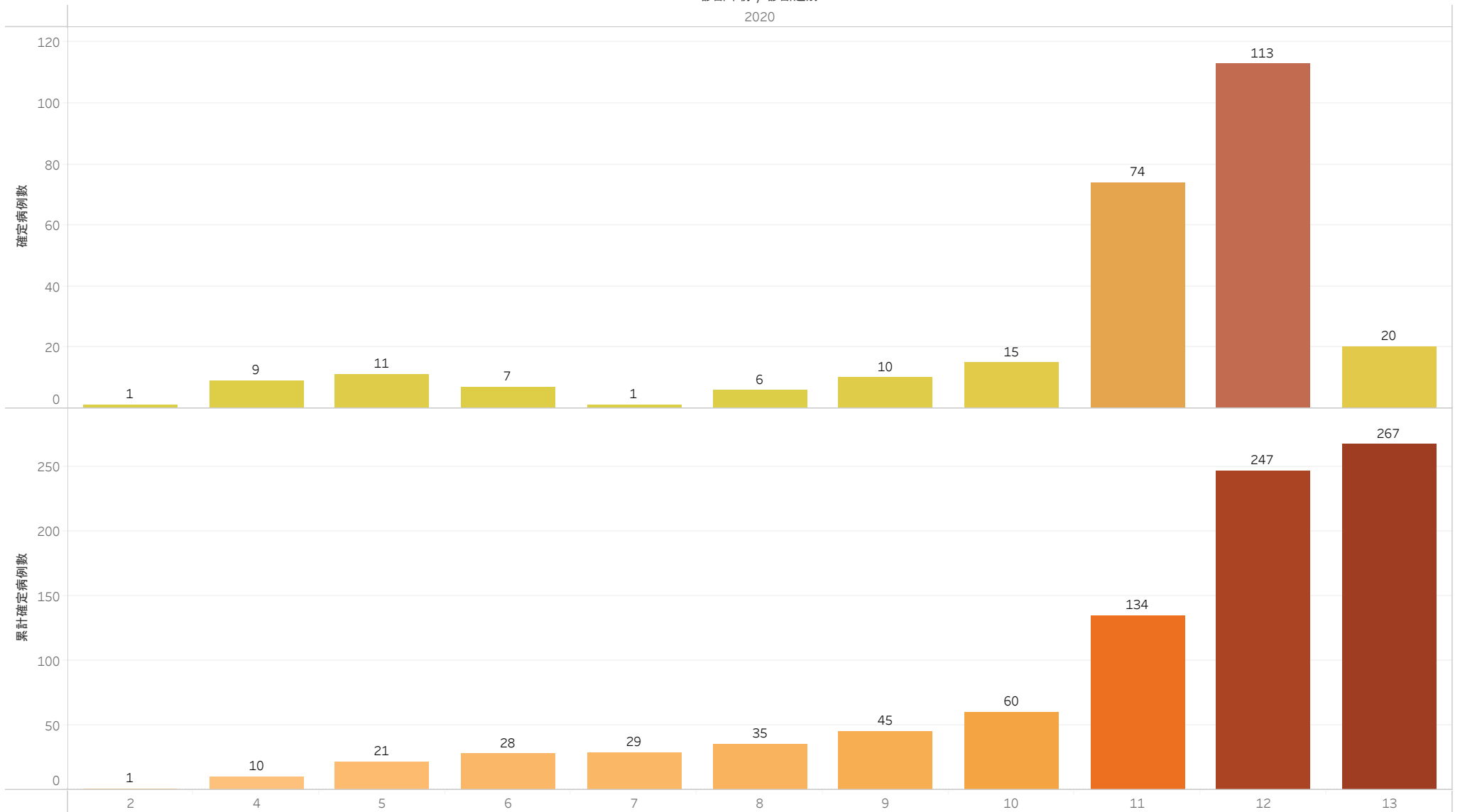


Sum of 確定病例數 for each 年齡層. Color shows sum of 確定病例數. The marks are labeled by sum of 確定病例數. Details are shown for Today (MDY).



# COVID-19 台灣確定病例數 267 - 依 診斷週別 (March 28, 2020)

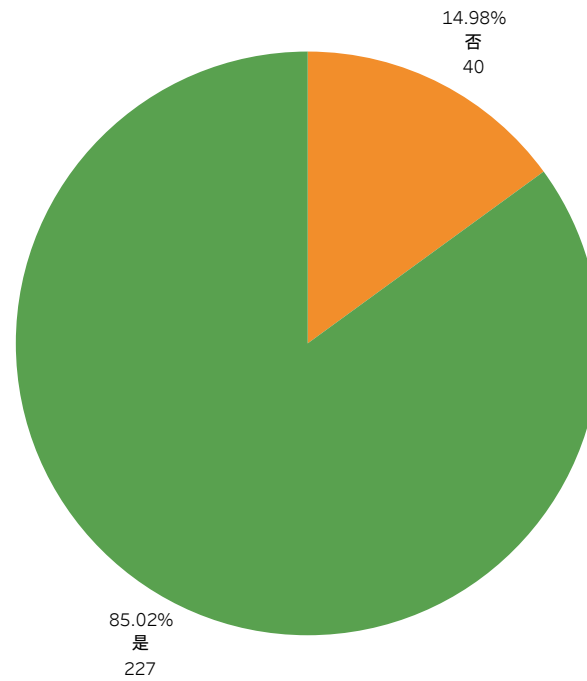
診斷年份 / 診斷週別  
2020



Sum of 確定病例數 and Running Sum of 確定病例數 for each 診斷週別 broken down by 診斷年份. Details are shown for Today (MDY). For pane Sum of 確定病例數: Color shows sum of 確定病例數. The marks are labeled by sum of 確定病例數. For pane Running Sum of 確定病例數: Color shows Running Sum of 確定病例數. The marks are labeled by Running Sum of 確定病例數.

確定病例數 1 113  
 Running Sum of 確定病. 1 267

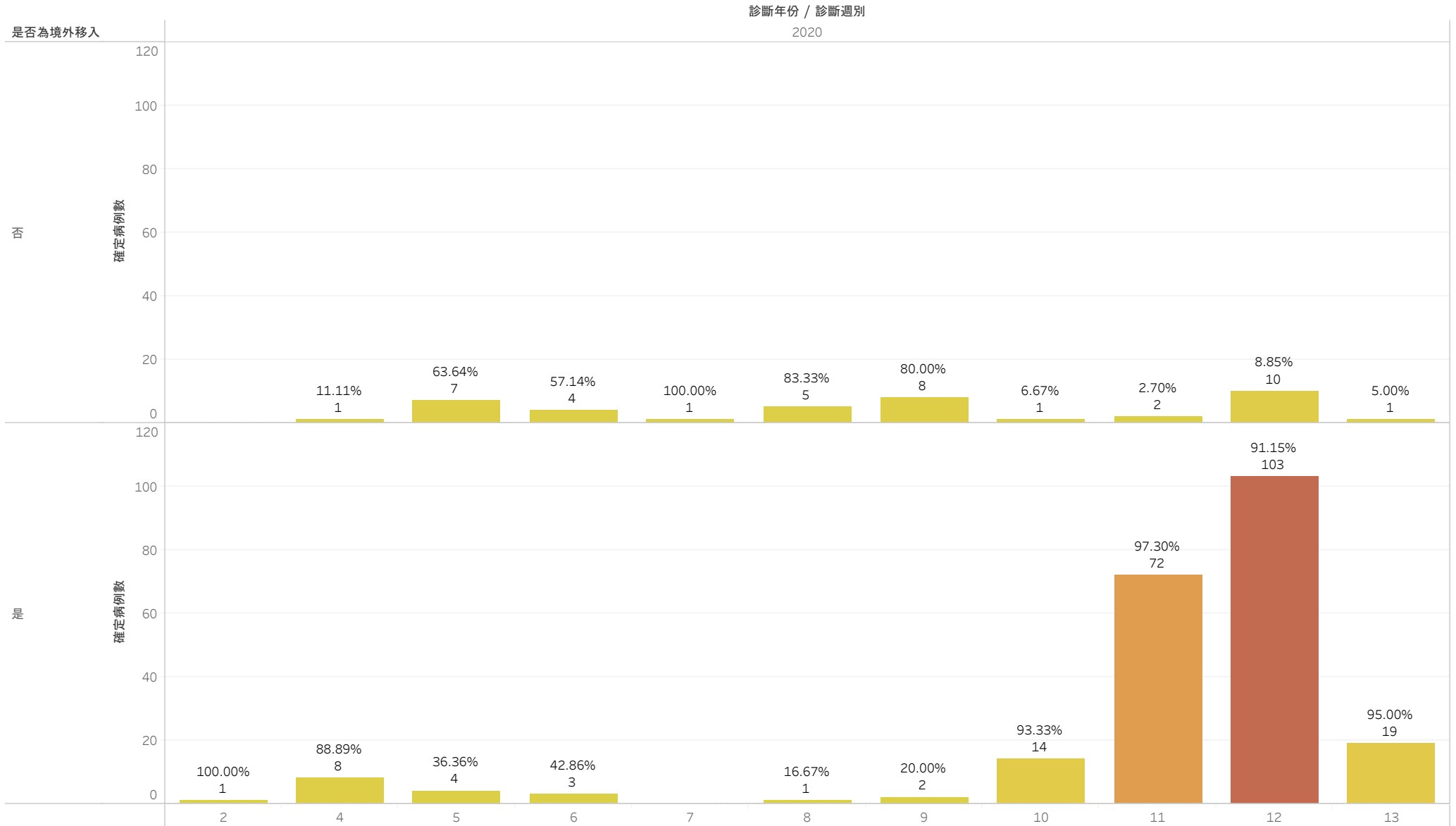
COVID-19 台灣確定病例數 267 - 依 是否為境外移入 (March 28, 2020)



% of Total 確定病例數, 是否為境外移入 and sum of 確定病例數. Color shows details about 是否為境外移入. Size shows sum of 確定病例數. The marks are labeled by % of Total 確定病例數, 是否為境外移入 and sum of 確定病例數. Details are shown for Today (MDY).

確定病例數 267  
是否為境外移入  
否  
是

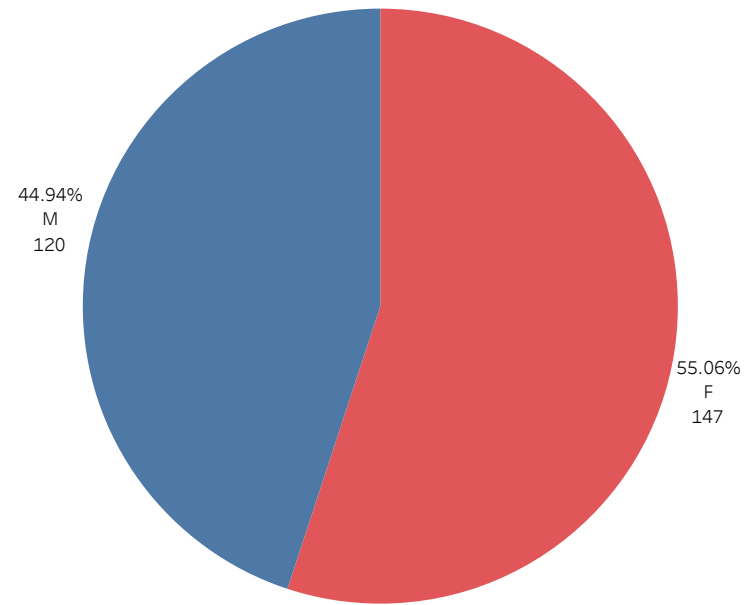
# COVID-19 台灣確定病例數 267 - 依 是否為境外移入 & 診斷週別 (March 28, 2020)



Sum of 確定病例數 for each 診斷週別 broken down by 診斷年份 vs. 是否為境外移入. Color shows sum of 確定病例數. The marks are labeled by % of Total 確定病例數 and sum of 確定病例數. Details are shown for Today (MDY).

確定病例數  
1  103

COVID-19 台灣確定病例數 267 - 依 性別 (March 28, 2020)

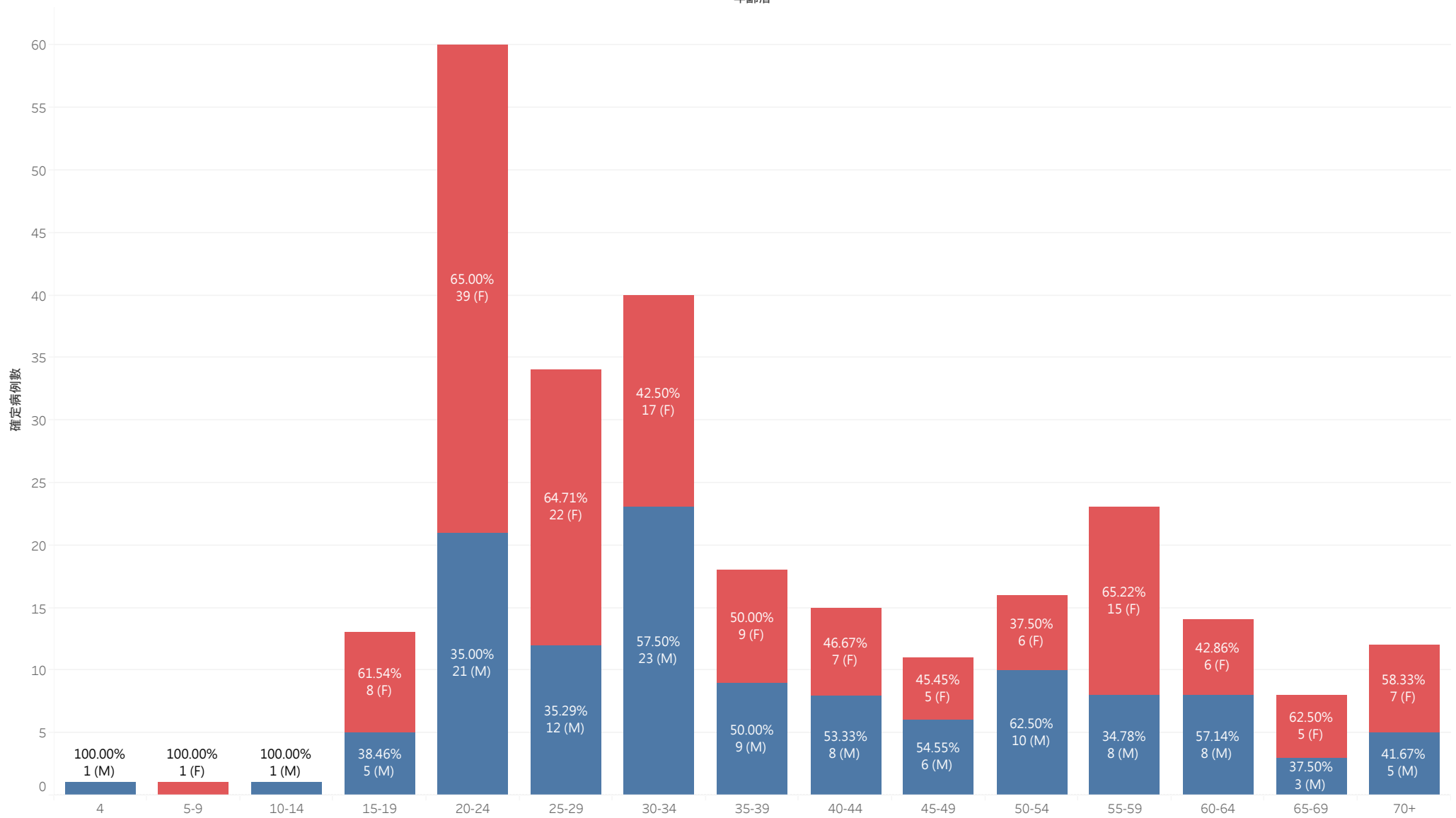


% of Total 確定病例數, 性別 and sum of 確定病例數. Color shows details about 性別. Size shows sum of 確定病例數. The marks are labeled by % of Total 確定病例數, 性別 and sum of 確定病例數. Details are shown for Today (MDY).



# COVID-19 台灣確定病例數 267 - 依 年齡層 & 性別 (March 28, 2020)

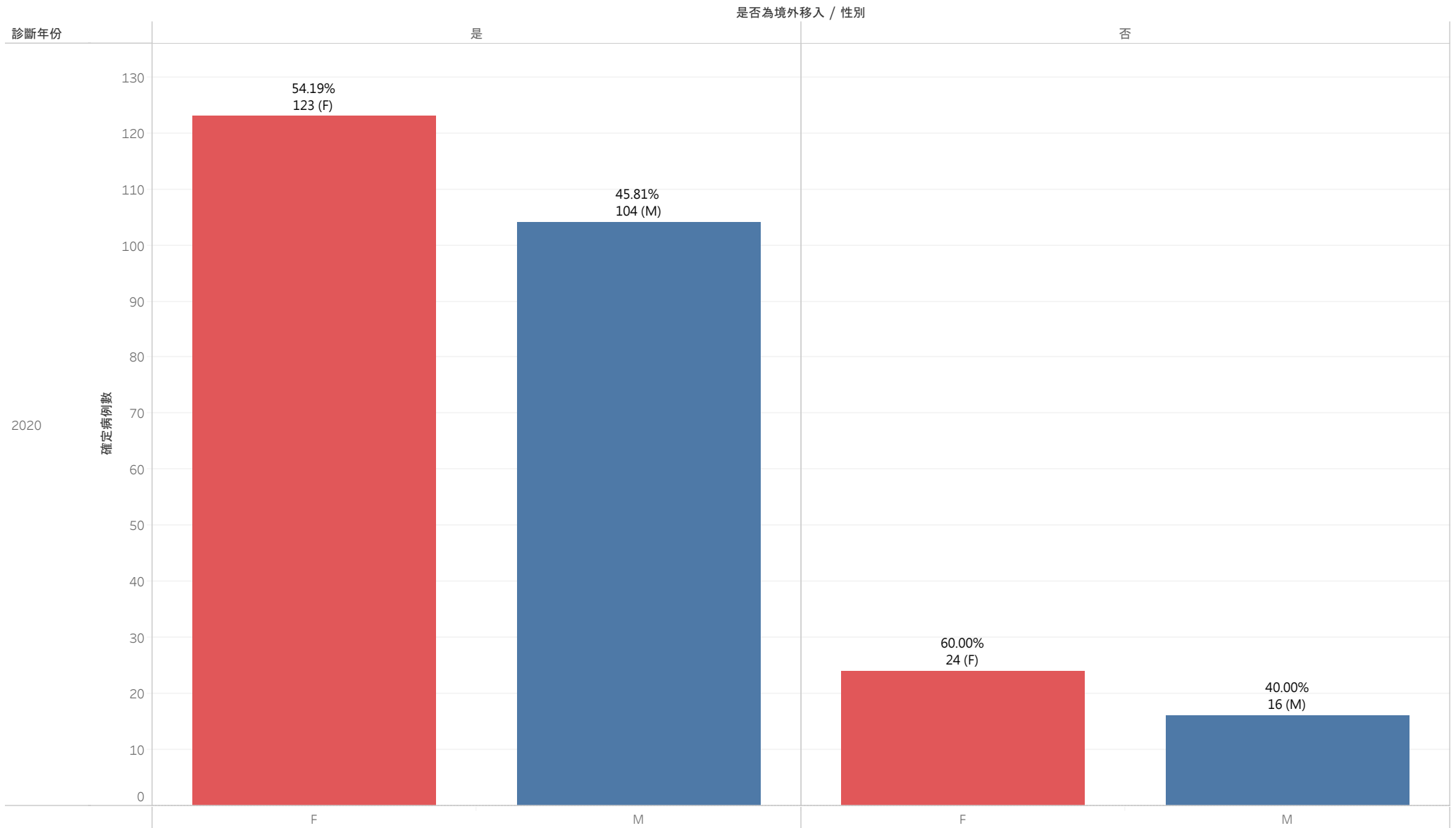
年齡層



Sum of 確定病例數 for each 年齡層. Color shows details about 性別. The marks are labeled by % of Total 確定病例數, 性別 and sum of 確定病例數. Details are shown for Today (MDY).

性別  
■ F  
■ M

# COVID-19 台灣確定病例數 267 - 依 是否為境外移入 & 性別 (March 28, 2020)



Sum of 確定病例數 for each 性別 broken down by 是否為境外移入 vs. 診斷年份. Color shows details about 性別. The marks are labeled by % of Total 確定病例數, sum of 確定病例數 and 性別. Details are shown for Today (MDY).

性別  
■ F  
■ M